

Title of the Paper (Text- Times New Roman, Font Size 16)

First A. Author¹, Second B. Author², Third C. Author³
Affiliations and address of all Authors with E mail of corresponding author

Abstract – *This template represents the basic guidelines and desired layout final manuscript of Paper. Abstract should not contain any equations, references, or footnotes. This article plays the role of a template as well as the guidelines for prospective authors who will have to prepare the final manuscript accepted for publication by International Journal of Biotechnology, Chemical & Environmental Engineering (IJBCEE). Text (Times New Roman, Font Size 10, and Italics)*

Keywords: *Five to six keywords Text (Times New Roman, Font Size 9, Italics)*

I. Introduction

Text (Times New Roman, Font Size 10).....
.....
.....
.....

II. Materials & Methods

Text (Times New Roman, Font Size 10).....
.....
.....
.....
.....
.....
.....

III. Results & Discussion

Text (Times New Roman, Font Size 10).....
.....
.....

IV. Conclusion

Text (Times New Roman, Font Size 10).....
.....
.....

References

This heading is not assigned a number.
Citations must be numbered consecutively in square brackets [1]. The sentence punctuation should be put after the brackets [2]. Multiple references [2], [3] are each numbered with separate brackets [1]-[3]. In sentences, refer simply to the reference number, as in [3]. Do not use ‘Ref. [3]’ or ‘reference [3]’ except at the beginning of a sentence. The list of references should be arranged in the order of citation in text, not in alphabetical order. The text body of the reference has to be 8 pt, single spaced.

Modality of Journal Papers’ quote:
R. Di Felice, The sedimentation velocity of dilute suspensions of nearly monosized spheres, *Int. J. Multiphase Flow* 25 (1999) 559-574.
Note that journal title and volume number (but not issue number) are set in italics.

Modality of Books’ quote:
S. I. Smedley, *The Interpretation of Ionic Conductivity in Liquids* (Plenum Press, 1980).
Note that the title of the book is in lower case letters and italicized. There is no comma following the title. Edition date and publisher are given.

Modality of Chapters in Books’ quote:
S. I. Smedley, *The Interpretation of Ionic Conductivity in Liquids* (Plenum Press, 1980, pp. 581-600).
Note that the place of publication, publisher, and year of publication are enclosed in brackets.

Modality of Theses’ quote:
J. Williams, *Narrow-band analyzer*, Ph.D. dissertation, Dept. Elect. Eng., Harvard Univ., Cambridge, MA, 1993.
Note that thesis title is set in italics and the university that granted the degree is listed along with location information.

Modality of Proceedings Papers’ quote:
D. Desvigne, F. Larachi, Ferrofluid magnetoviscous control of wall flow channeling in porous media, *17th IMACS World congress Scientific Computation, Applied Mathematics and Simulation. Paris, France, July 11-15 (2005).*

Acknowledgement

This work was supported by XYZ.

Instructions for Tables and Figures

Please insert your figures with “inline wrapping” text style, as in this template (see Fig. 1).

Please do not use colors in the figures, unless it is necessary for the proper interpretation of your figures. Place figure captions below the figures; place table titles above the tables. Tables and figures must be centered. Large figures and tables may span both columns. If your figure has two parts, include the labels “(a)” and “(b)”. Letters in the figure should be large enough to be readily legible when the drawing is reduced. Do not forget to include the label, unit for each axis and the legend when they are required. Use the abbreviation “Fig.” even at the beginning of a sentence. Do not abbreviate “Table.” Tables are numbered with Roman numerals. Please do not include captions as part of the figures. Do not put captions in “text boxes” linked to the figures. Do not put borders around the outside of your figures. Do not use color for the proper interpretation of your figures. The title of the table must be centered; it has to be 8 pt typed in capital letter. Leave one line space of 10 pt after the table.

TABLE I
VOLUME PARAMETERS FOR ATOMS, GROUPS, AND FRAGMENTS

Species	$V/\text{\AA}^3$	Species	$V/\text{\AA}^3$
Neutral			
imidazole	84	1,2,4-triazole	79
tetrazole	75	s-triazine	90
1,2,4,5-tetrazine	87	pyrimidine	100
cubane	135	furazan	77
benzene	110	pyridine	105
Groups			

No vertical lines in table.

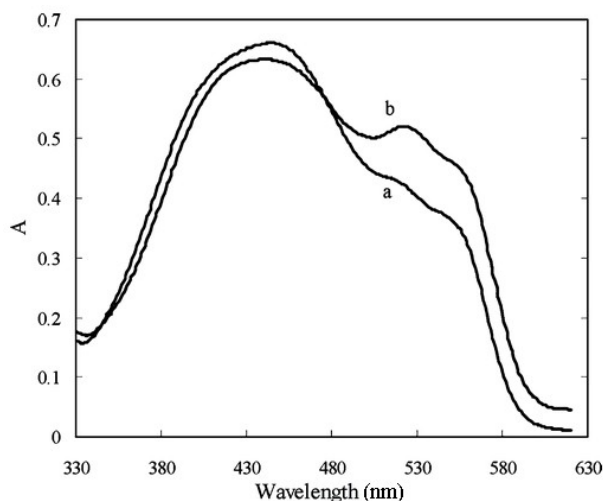


Fig. 1. Absorption spectra for $4 \cdot 10^{-5} \text{ mol} \cdot \text{L}^{-1}$ methyl red in (a) water and (b) water-ethanol (80/20) at pH 5.4

Figure caption must be 8 pt. Leave one line space of 10 pts after the figure caption.

Abbreviation and Acronyms

Abbreviation and acronyms should be defined the first time they appear in the text, even after the have already been defined in the abstract. Do not use abbreviations in the title unless they are unavoidable.

Units

It is strongly encouraged that the authors may use SI (International System of Units) units only.

Equations

Equations should be placed at the center of the line and provided consecutively with equation numbers in parentheses flushed to the right margin, as in (1). You must use Microsoft Equation Editor.

Be sure that the symbols used in your equation have been defined before the equation appears or immediately following:

(1)

The equations must be the following sizes:

- Full text 10pt
- Subscript/Superscript 7 pt
- Sub-Subscript/superscript 5 pt
- Symbol 16pt
- Sub-Symbol 8 pt

The style of the text is Times new Roman.